

**Tillbridge Solar Project  
EN010142**

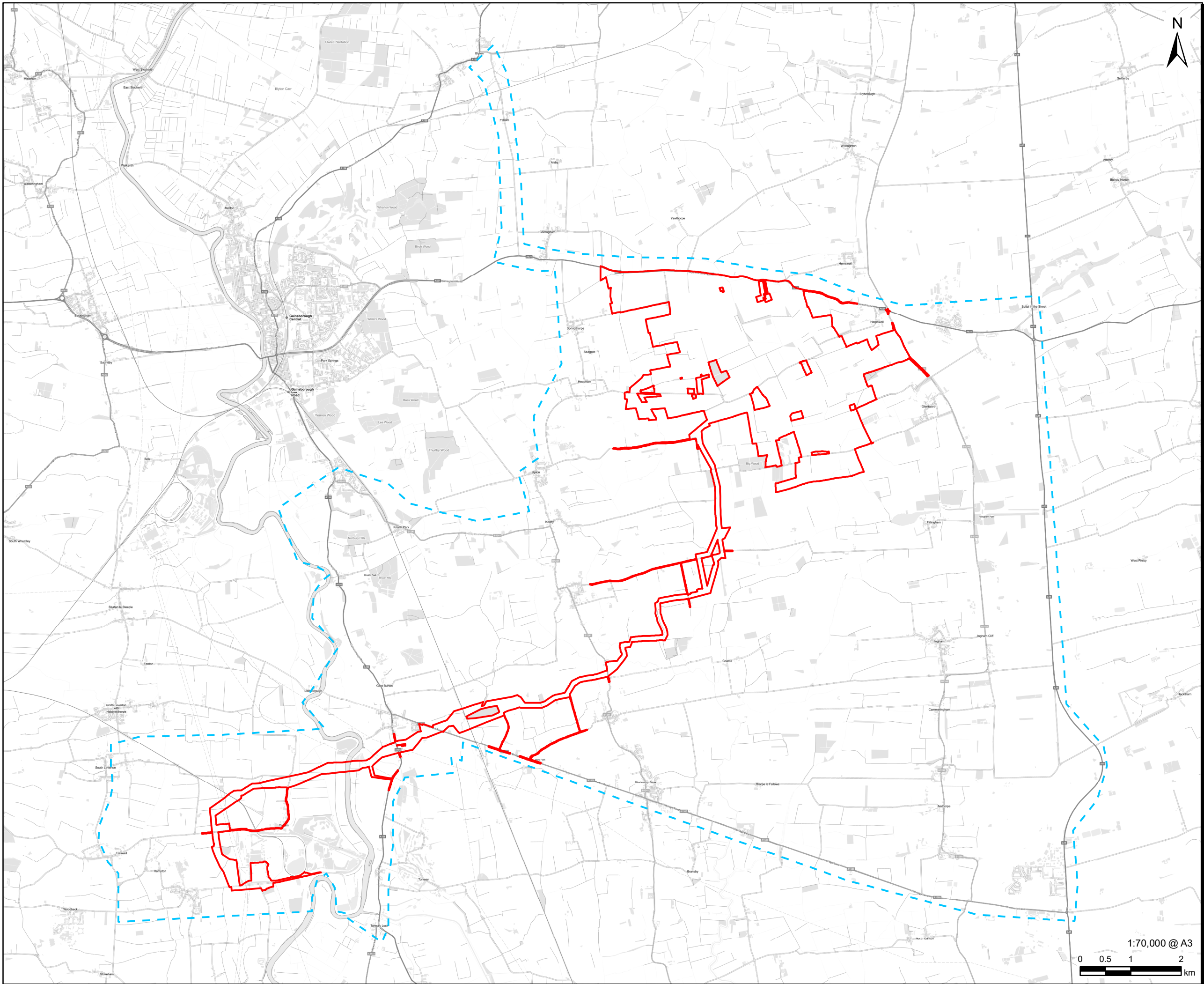
**Volume 6  
Environmental Statement**  
Figure 16-1: Transport and Access Study Area  
Document Reference: EN010142/APP/6.3

**Regulation 5(2)(a)  
Infrastructure Planning (Applications: Prescribed Forms and  
Procedure) Regulations 2009**

**April 2024  
Revision Number: 00**

**tillbridgesolar.com**

Revision: 0 Drawn: HW Checked: LL Approved: CW Date: 2024-02-06  
Filename: i:\na.aecomnet.com\fs\EMEALondon-UK\LON06\Legacy\UKLON06\PPSW001-V1\DP\ELibrary\GIS\_DATA\Projects\Greta III\Layout\Tillbridge Solar\ES\Chapter 16 - Transport\TillbridgeSolar\_Transport\_Figure 16-1\_TransportandAccess.mxd



**AECOM**  
PROJECT  
Tillbridge Solar Project

CLIENT  
Tillbridge Solar Ltd

CONSULTANT  
Aldgate Tower  
2, Leman Street  
London, E1 8FA  
United Kingdom  
T +44-0207-645-2000

LEGEND  
Order limits  
Transport and Access Study Area

NOTES  
Contains Ordnance Survey Data © Crown Copyright and database right 2024.  
© Crown copyright and database rights 2024.  
Ordnance Survey 0100031673.

ISSUE PURPOSE  
DCO Submission

PROJECT NUMBER  
60677969

FIGURE TITLE  
Transport and Access Study Area

FIGURE NUMBER  
Figure 16-1

The drawing has been prepared for the use of AECOM's client. It may not be used, modified, reproduced or relied upon by third parties, except as agreed by AECOM or as required by law. AECOM accepts no responsibility, and denies any liability whatsoever, to any party that uses or relies on this drawing without AECOM's express written consent. Do not scale this document. All measurements must be obtained from the stated dimensions.